

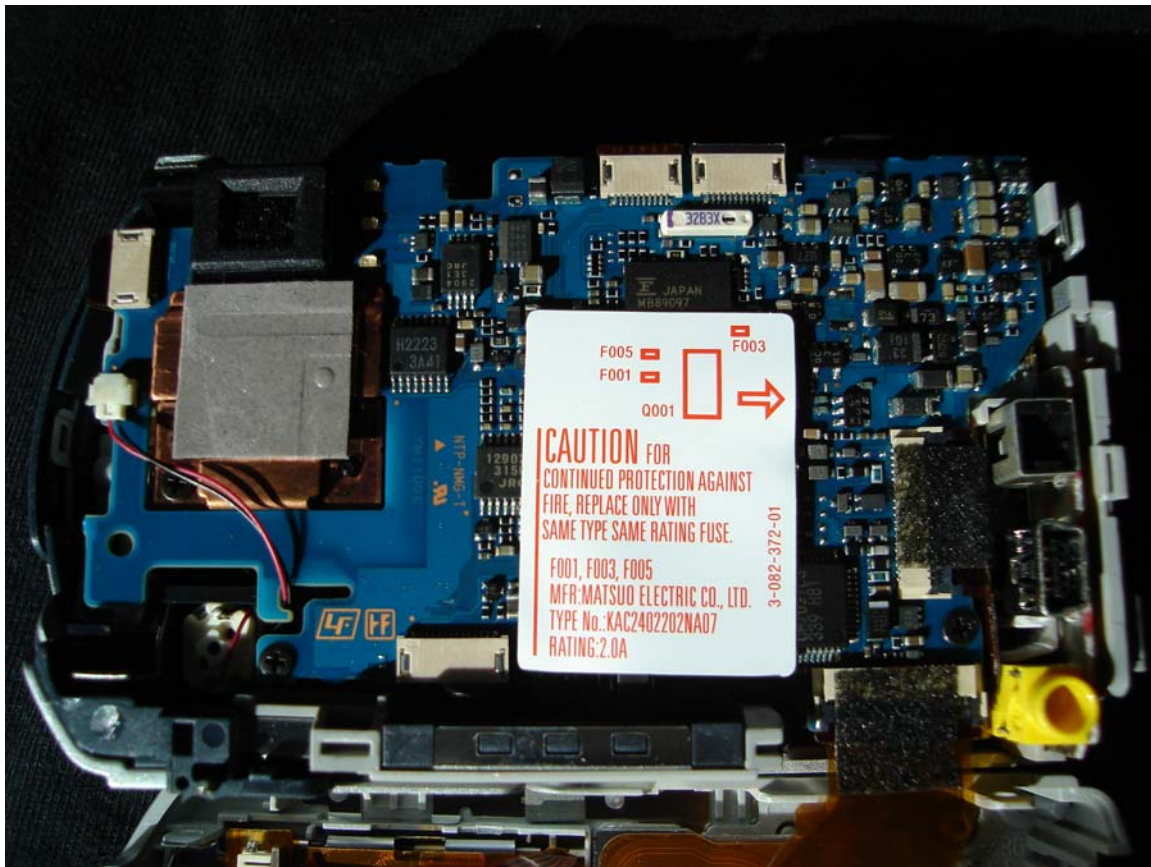
Whitetail Supply & Feed, LLC

“P32 IR Modification” Not responsible for loss or damage

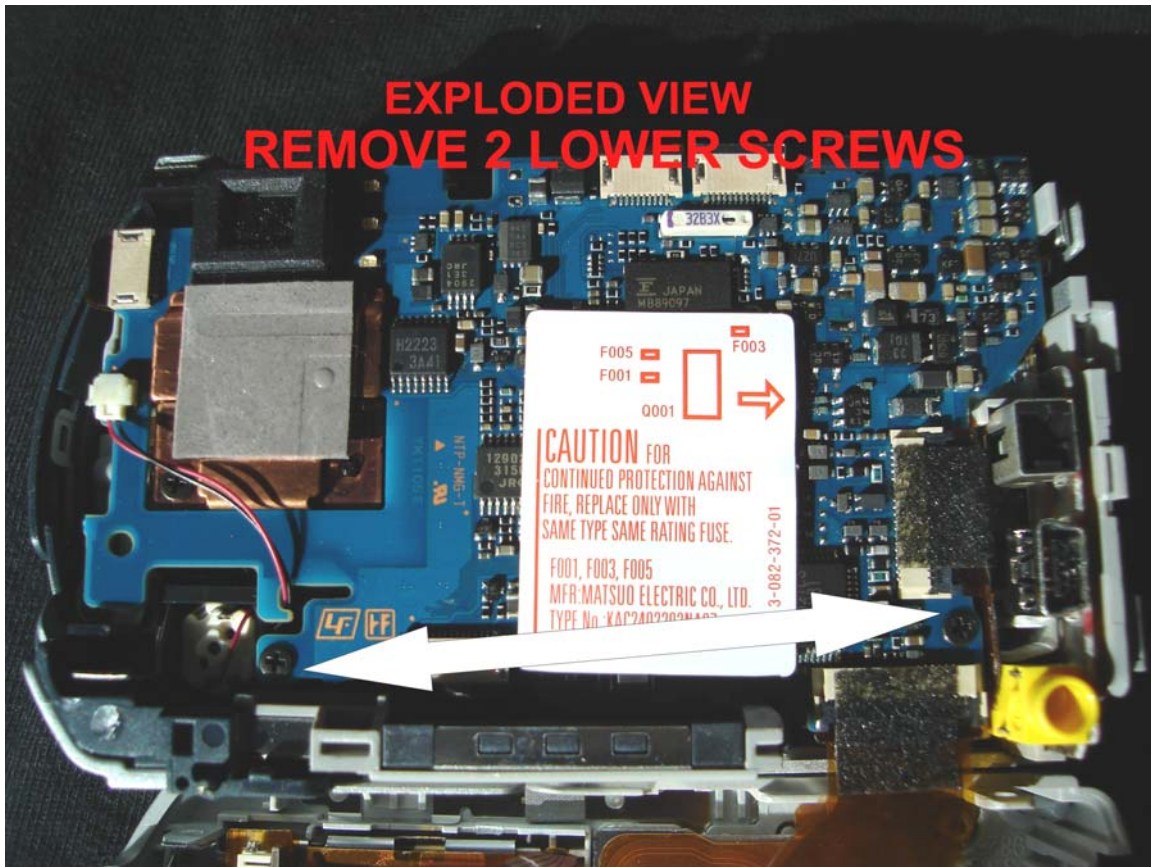
- **STEP 1** ONLY IF YOU WANT TO HAVE A SILENT CAMERA "PROCEED": POWER ON CAMERA, AND OPEN THE BATTERY DOOR, REMOVE BATTERIES AND PROCEED TO FOLLOWING STEPS
- **STEP 2** REMOVE EXTERIOR HOUSING SCREWS



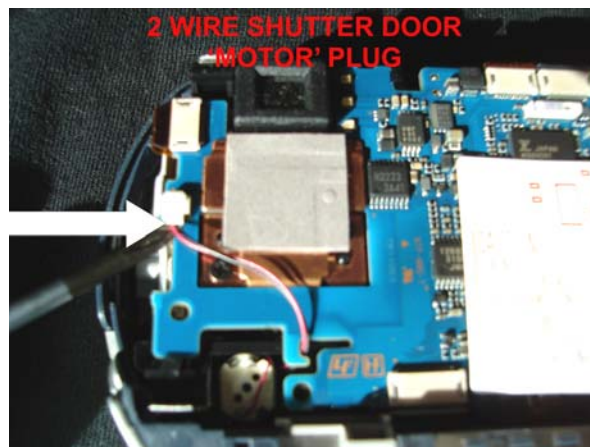
- **STEP 3 OPEN BATTERY DOOR**
- **STEP 4 SEPERATE THE CAMERA (REMOVE REAR COVER PLATE FIRST)**



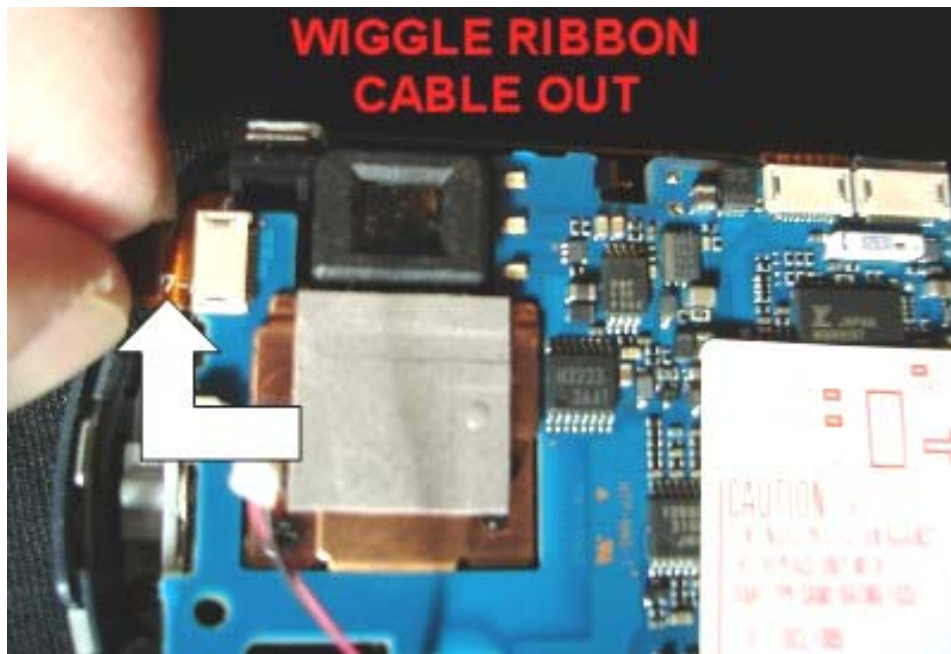
STEP 5 REMOVE THE 2 SMALL BLACK SCREWS ON THE LOWER SECTION OF THE PCB 1 IS NEAR THE USB AND 1 IS NEAR THE SHUTTER MOTOR



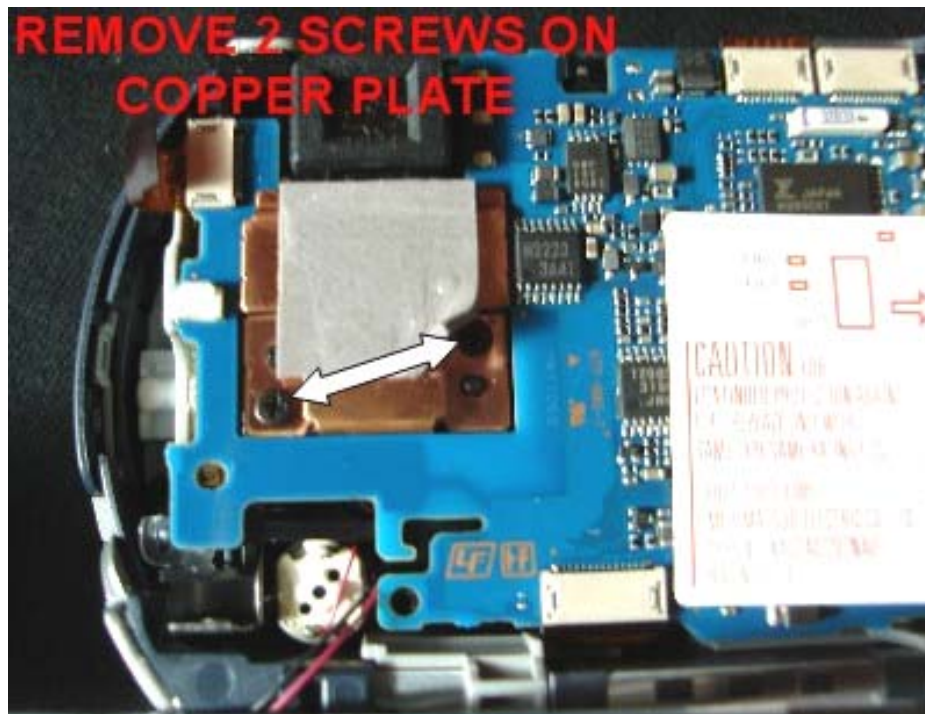
- **STEP 6 UNPLUG THE SHUTTER DOOR MOTOR (LEAVE THIS UNPLUGGED IF YOU WANT A SILENT CAMERA)**



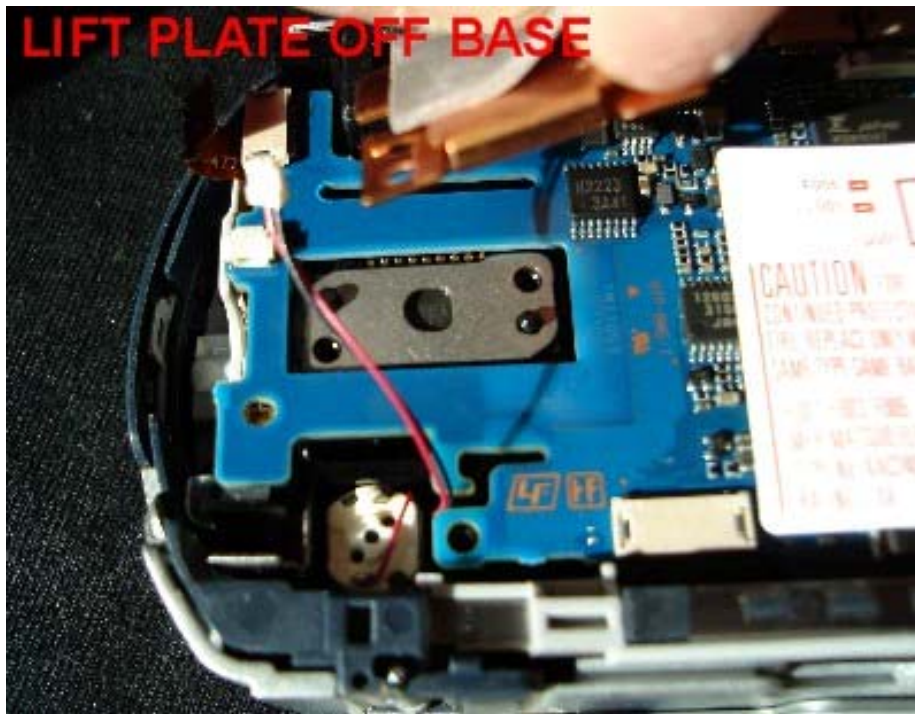
- **STEP 7 WIGGLE THE TOP LEFT RIBBON CABLE OUT**



- **STEP 8 REMOVE 2 SCREWS ON BACK COPPER PLATE THAT COVERS THE CCD**



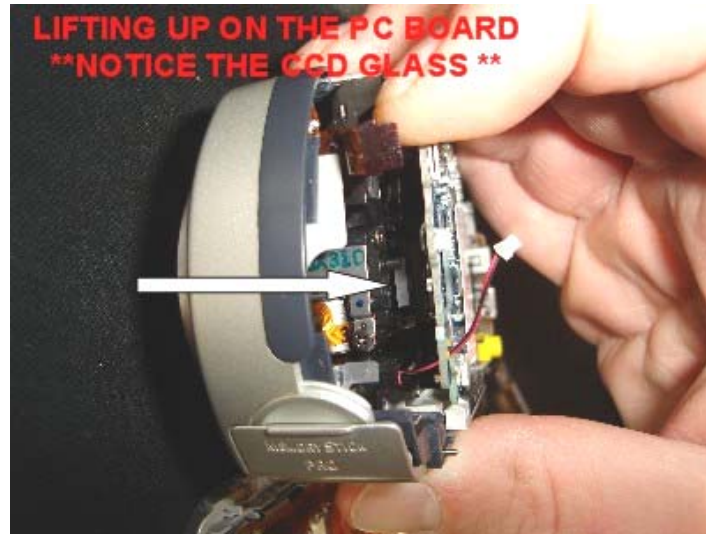
- **STEP 9** LIFT THE COVER OFF AND SET IT TO THE SIDE



- **STEP 10** THERE IS A SMALL BLACK TAB NEAR THE EYE VIEW ON THE TOP OF THE PCB SIMPLY PUSH THIS BLACK TAB TO THE RIGHT, GENTLY WITH YOUR INDEX FINGER WHILE GRASPING HOLD OF THE LEFT SIDE OF THE PCB BOARD AND LIFTING UPWARD JUST ENOUGH TO ALLOW ROOM TO SLIDE TWEEZERS UNDERNEATH THE PCB AND REMOVE THE ORIGINAL GLASS **(WHICH 99% OF THE TIME IS STUCK TO THE RUBBER BOOT ON THE CCD LENS)**



- **STEP 11** SLIDE THE TWEEZERS INWARD AND GRASP THE EDGES OF THE ORIGINAL GLASS AND WIGGLE IT JUST A LITTLE BIT AND IT WILL FALL OFF OF THE RUBBER BOOT. PULL THE GLASS OUT AND PUT IT OFF TO THE SIDE SO YOU DON'T CONFUSE IT WITH THE REPLACEMENT GLASS.



- **STEP 12** NEXT GRASP THE NEW PIECE OF GLASS THE SAME WAY AND INSTALL IT INTO THE BASE, JUST DROP THE GLASS AS CLOSE AS STRAIGHT AS POSSIBLE IN THE BASE, THEN USE YOUR TWEEZERS TO STRAIGHTEN OUT THE PIECE OF GLASS SO IT FITS FLUSH ON ALL EDGES IN THE BASE DO NOT FORCE THE GLASS INTO PLACE.



- **STEP 13** REINSTALL THE PCB BACK OVER THE GLASS TO IT'S ORIGINAL POSITION AND CLICK THE PCB BACK INTO IT'S ORIGINAL POSITION WITH THE TOP LEFT BLACK TAB THAT HOLDS IT IN PLACE, THEN THE FOLLOWING INSTALLATION IN REVERSE ORDER FROM DISASSEMBLE INSTRUCTIONS.