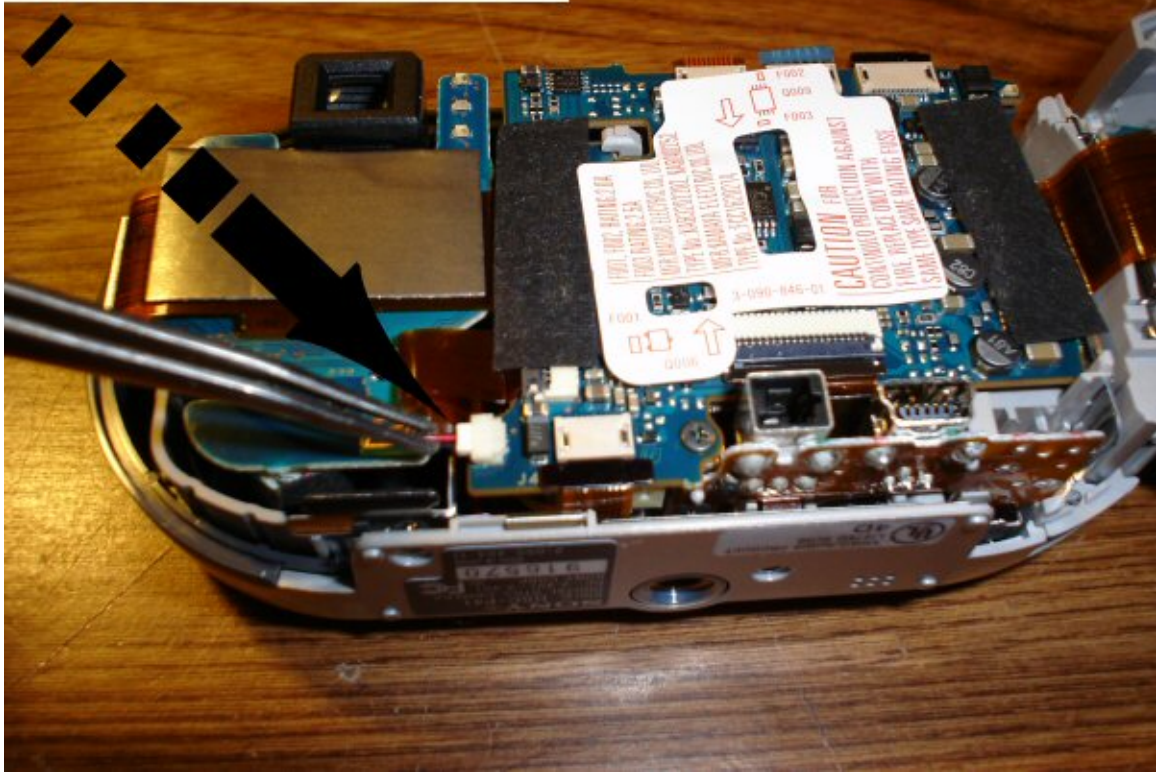
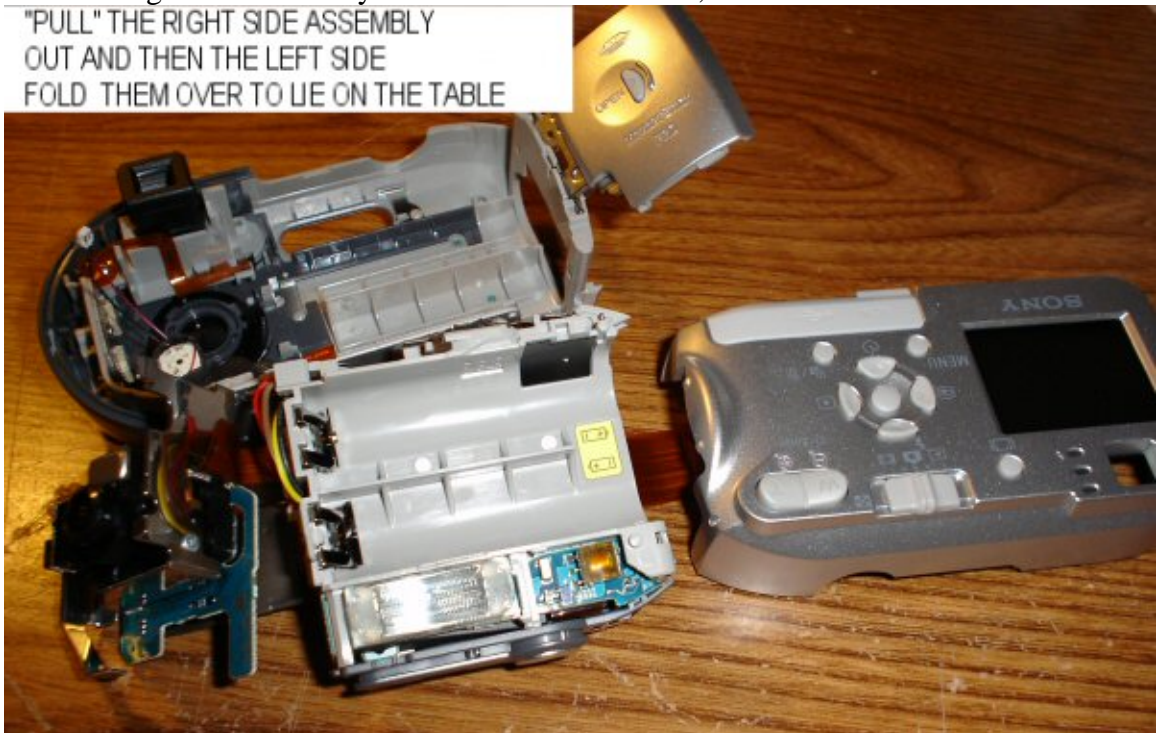


REMOVE THE SMALL 2 WIRE PLUG



Pull the right side assembly out and then the left side, fold them over to lie on the table.

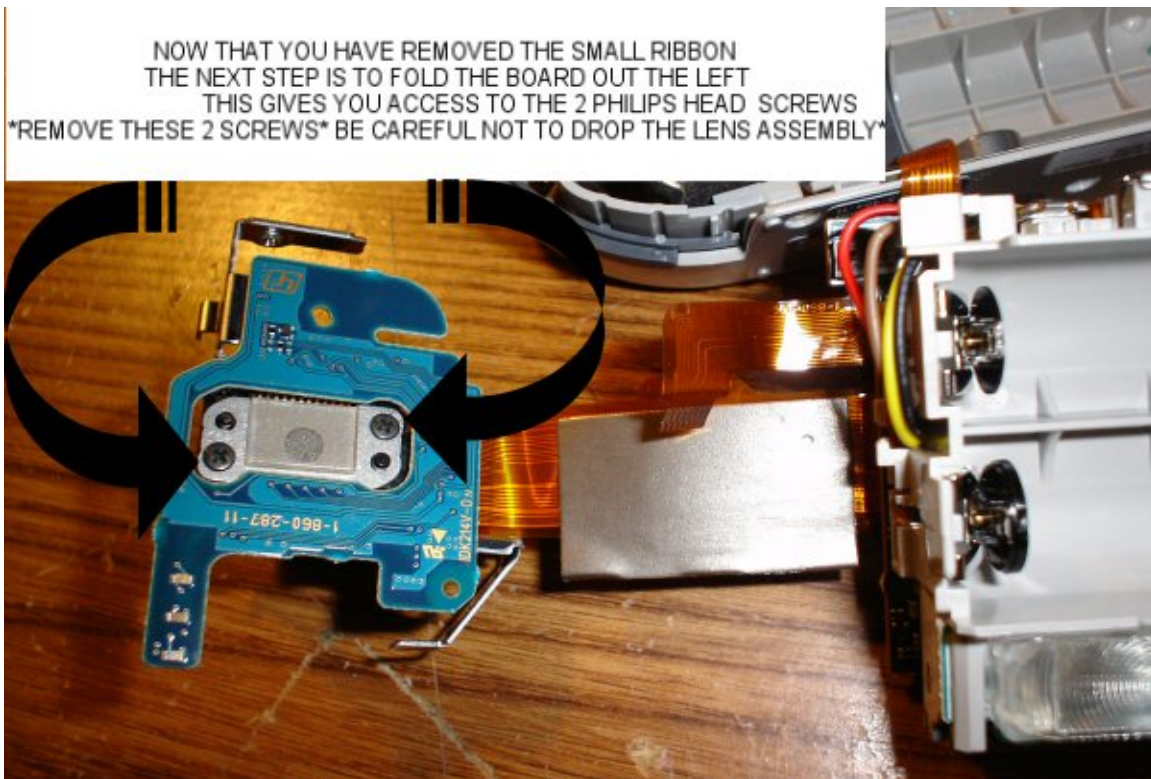
"PULL" THE RIGHT SIDE ASSEMBLY
OUT AND THEN THE LEFT SIDE
FOLD THEM OVER TO LIE ON THE TABLE

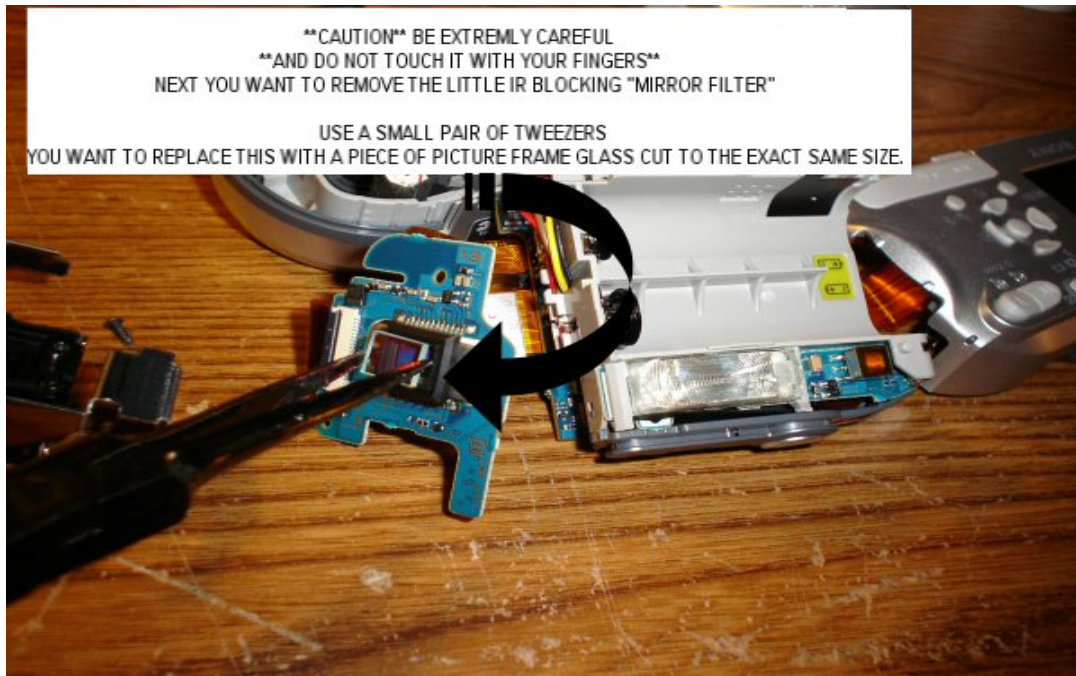


NEXT YOU WANT TO GENTLY PULL THE SMALL RIBBON CABLE THAT ATTACHES THE MAIN BOARD TO THE CCD CHIP SHUTTER LENS BOARD. YOU CAN EASILY REMOVE THIS RIBBON WITH YOUR THUMB AND INDEX FINGER.



NOW THAT YOU HAVE REMOVED THE SMALL RIBBON THE NEXT STEP IS TO FOLD THE BOARD OUT THE LEFT THIS GIVES YOU ACCESS TO THE 2 PHILIPS HEAD SCREWS *REMOVE THESE 2 SCREWS* BE CAREFUL NOT TO DROP THE LENS ASSEMBLY*





Modified IR P41 camera.
Sky line with filter "broad daylight"



Sky line without filter "broad daylight"

